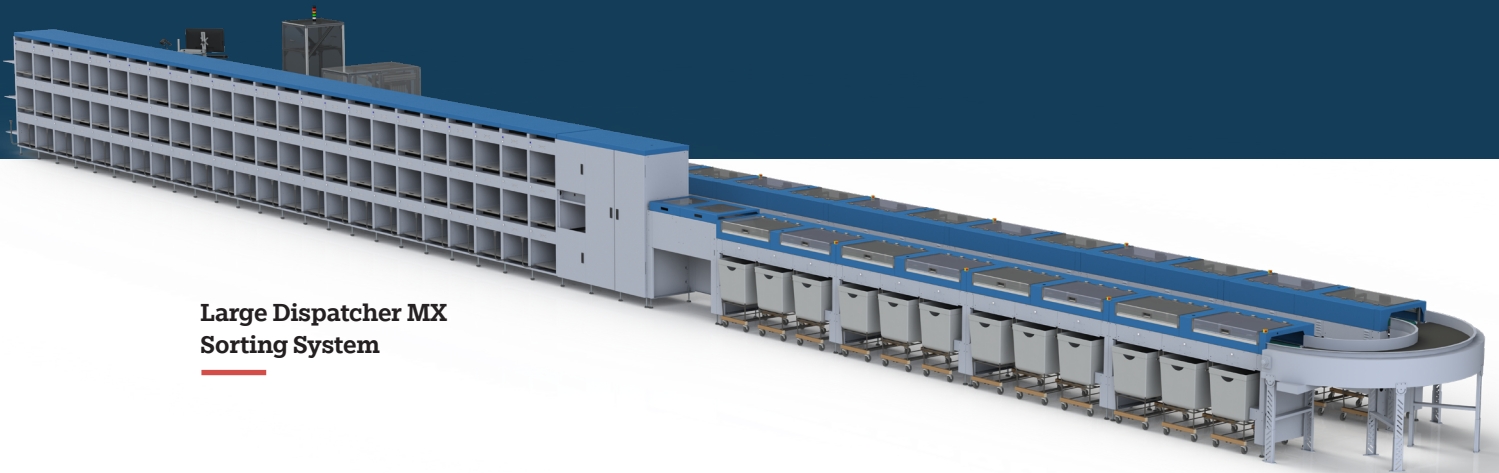


Dispatcher MX Sorting System

Automating Letters, Flats, Packets
& Mixed Mail Streams



Large Dispatcher MX
Sorting System



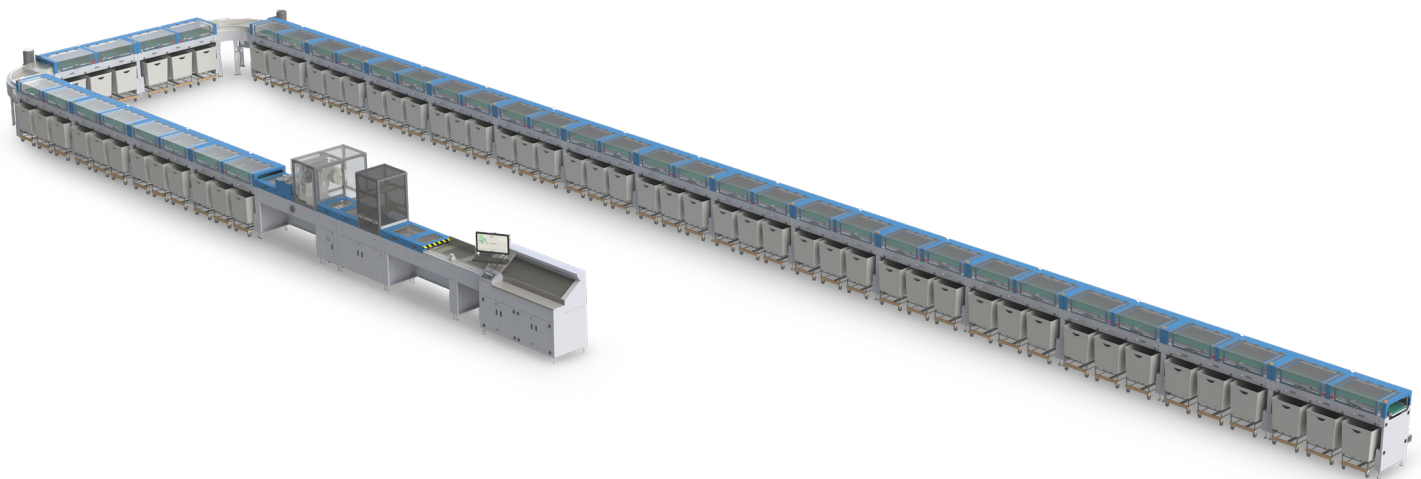
Engineering Automation. Delivering Success.

RUGGED. RELIABLE. AFFORDABLE. FLAT AND MIXED MAIL.

RAISING THE BAR FOR MIXED MAIL SORTING

The Dispatcher MX mixed mail sorting system raises the bar for letter, flat, packet and mixed mail sorting automation. The system provides maximum mail piece dimension range, excellent throughput, best-in-class flexibility, rugged reliability and affordable price points, among many other benefits. This sorting solution is

designed for demanding applications including multiple shift postal operations. The Dispatcher family of machines has been used by major postal operators such as Deutsche Post, TNT Post, Post Danmark, Post NL, Royal Mail, and major mail service operators in UK, USA, and other countries.



PRICED TO PLEASE

As the primary automation sorting system for mixed mail, or as a complement to existing high speed mail sorting systems or manual workstations, the Dispatcher MX Series mail sorting system is priced to give you the quickest payback possible on your

system. This is achieved by designing for purpose with affordability and flexibility as prime goals. One sorting system that can process a wide range of envelope sizes, types and materials can have a faster ROI by allowing utilization across more mail.

VERSATILE & MODULAR

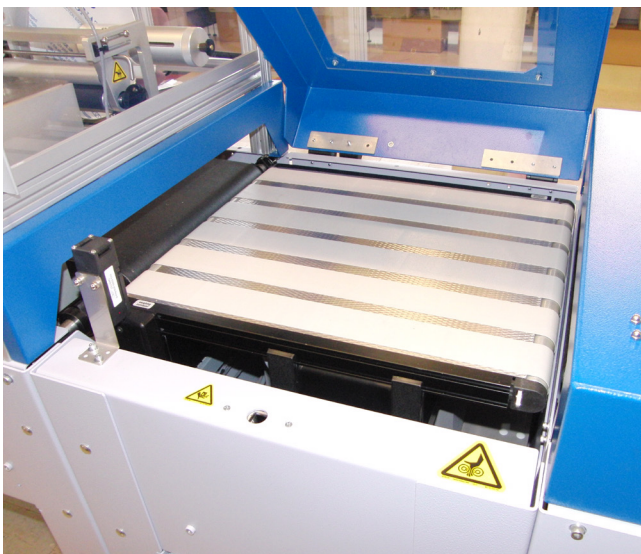
The Dispatcher MX will process postcards, letters, flats, poly envelopes and small mailing packets and parcels (boxables), depending on the sorting modules selected (TL3 or SL3). Maximum mail piece thickness should be considered when configuring the Dispatcher MX sorting solution. TL3 systems will process up to 20mm thick pieces. Versions that use SL3 sorting modules can process up to 35mm thick mail pieces when printing is required, and 60mm when only sorting is required.

Because the Dispatcher MX mixed mail sorting system is modular and versatile, and can include inline weighing, mail format detection, OCR and BCR, labeling and/or printing directly onto mail pieces, and sorting, the application of this system can include:

- Domestic mail barcoding and sorting for postal applications and postal worksharing

discounts based on qualification levels achieved in the sorting process.

- Outbound international mail sorting by country with the ID Mail WORLD.ware PLUS address coding database and piece to container tracking and postal manifesting
- Postal franking of large volume commercial or government department mail with direct billing from data provided by the Dispatcher MX.
- Incoming mail processing including identification and sorting to internal delivery routes.
- Mail sorting for private delivery and courier companies that need to sort mail to their specific routing needs and to capture data for billing clients and provide tracking of deliveries.
- Revenue protection of prepared mail submitted by larger commercial entities via permit postage payment to postal operators.
- Special projects that include data capture & sorting.



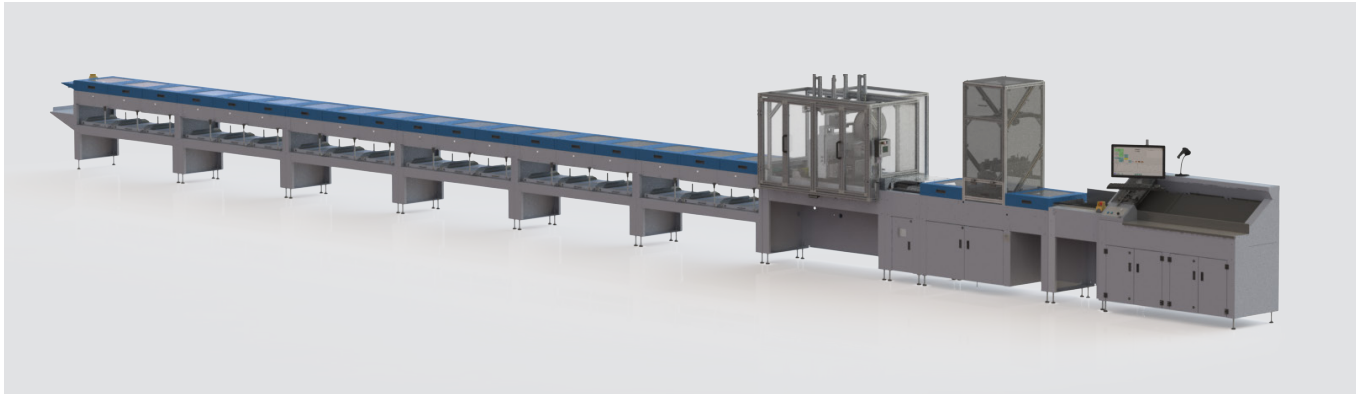
SOME OF THE STANDARD & OPTIONAL FEATURES OF THE DISPATCHER MX

- Automatic and manual mail feeding for maximizing productivity and mail processing options.
- Capable of processing an extremely wide range of mail sizes from postcards to large and thick mail items- up to 35 mm with printing and 60mm with sorting only.
- Throughput- up to 10 to 12k depending on mail size and 9.4k per hour with weighing in a legal for trade mode
- In-line weighing for up to 2Kg and mail format detection with item thickness detected across the entire mail item
- Full mail piece camera imaging with a field-of-view 13" (330mm).
- High performance 1.5" (38.1 mm) print area using a variety of ink types with its ink jet printing system and automatic compliant belt tensioning for variable thick mail pieces.
- Batch enabled label applicator for printing on plastic wrap or glossy stock. Optional solvent ink cartridges are also available for difficult substrates.
- SQL database architecture and interface to customer IT requirements with affordable IT integration.



KEY BENEFITS

- Proven postal mail processing expertise with flexible solutions that provide 100% processing solution with ID Parcel & Mail Solutions Video Encoding systems.
- Optical Character Recognition (OCR) and Barcode Reading (BCR) for different sorting needs.
- Customizable mail coding solutions that allow the use of the Dispatcher MX for a wide variety of mail processing and sorting applications.
- System processes a higher percentage of customer mail than most sorting systems on the market today.
- Manual in-feed for difficult mail pieces achieves higher productivity than manual processing
- Modular design for future expansion and options for adding value-added mail processing services such as:
 - Domestic mail barcoding and sorting
 - Outbound international mail sorting
 - Incoming mail sorting
 - Business Reply Mail processing
 - Revenue Protection and Terminal Dues statistics
 - Franking of business mail for corporate or government clients
 - Lower staff and maintenance costs through easy to use and support designs.



SYSTEM DETAIL DESCRIPTION

Automatic Mail Feeder

The MX feeder is designed to automatically feed mail pieces from postcards to large letters up to 16mm (5/8") in thickness. A dual-headed pick-off assembly feeds both landscape and portrait items by applying both vacuum assisted bottom drive and retard singulation from the top of the mail piece. A gap-controlled take-away roller assembly pulls single mail pieces out from the 1st register supply conveyor and measures the Gap between mail pieces to feed mail at an optimal throughput rate.

Manual Feeder & Aligner Module

The MX includes both an ergonomical belt feeding area and an active Aligner subsystem. The manual feeding belt area can be sized for one to three operators depending on the application. The active Aligner uses a series of rollers at a 15-degree angle to ensure proper mail piece alignment to the paper path for optimal OCR/BCR imaging, printing of indicia, and for tracking mail pieces through the

mail transport. Also at this module, sensors measure the maximum allowable size for a mail piece, and if the mail piece is too larger or too thick, the mail piece will be stopped at the end of the manual belt area for removal by the operator, avoiding damage to the mail piece or creating a jam.

Optional Inline Weighing Scale and Format Detection

The MX includes a highly accurate inline weighing scale system and a mail piece format detection system that utilizes both sensors and the imaging system along with a thickness caliper that uses a deflector which is applied across the entire mail piece for measuring the maximum height of the mail piece. The weight and the dimensions of the mail piece are captured and processed to determine the format category of each mail piece (letter/large letter/ packet). The scale is capable of being legal for trade certified and ID Parcel & Mail Solutions includes the required DSD encrypted file for local authority certification.



Imaging System

The MX camera imaging system is a high-resolution grayscale or optional color imaging system designed to maximize OCR and BCR coding of a wide variety of envelope materials and print characteristics. LED lamps with polarized lens matched to a polarized camera lens assembly eliminates most glare typically seen with poly-wrap envelopes and plastic envelope windows. The system captures high quality full mail piece images for both OCR and BCR of 1D and 2D barcodes.

ID Parcel & Mail Solutions proprietary address block locate software will process the mail piece image and automatically selects the address block for OCR recognition. When advertising or other printed information confuses the ABL software, the operator has the option of teaching the software where to find the Address block via a simple GUI tool to draw a box around the address block. The same tool can be used effectively to create an inclusion zone to search for the address, and areas outside the box will be effectively excluded from the ABL search.

Printing and Optional Labeling Systems

ID Parcel & Mail Solutions uses a proprietary compliant belt design that maximizes the range of thickness of mail pieces while ensuring high quality print and label data application to each mail piece. The Dispatcher MX can be configured with several different printing and labeling solutions including direct thermal inkjet, labeling applicators, and print and apply label applicators.

Sorting Module Options

The Dispatcher MX has two different sorting output module designs. One is a single level module with

3 sorting outlets per module (SL3) that accommodates up to 60mm thick mail pieces (35mm when printing is required). The second design is a three-level module (TL3) that also provides 3 outlets per module, but instead the outlets are stacked vertically and the thickness of mail pieces is limited to 20mm. This provides for a much shorter system linear length but requires a Ramp module that sorts mail to the top, middle or bottom tier before mail enters the TL3 sorting modules. Depending on the customer application and mail processing requirements, ID Parcel and Mail will configure the system with the appropriate sorting modules, which can include both types if needed.

Turn Conveyor Modules

ID Parcel & Mail Solutions understands that different customers have different facilities and need a flexible solution to keep the sorting automation affordable and capable of fitting into existing operations. As such, the Dispatcher MX can be configured to use one or more left or righthand turn conveyors to allow better use of space and optimized workflow. These industrial turn conveyors provide years of usage with minimal maintenance.

SOFTWARE

Flexible software allows easy management of mail processing including highly accurate coding engines for different mail streams. A few key software features available on the Dispatcher MX.

- Machine Control software is standard to ensure each piece is tracked, accounted for and sorted.
- Multi-line OCR and/or Barcode Recognition (BCR)
- INC.Ware for incoming mail; WORLD.Ware PLUS for cross-border mail; USPS CASS/MASS and reporting software for US Domestic Mail; Custom built address and sorting databases for domestic and private delivery applications.
- Custom data capture, printing and sorting applications easily provided and supported.
- Detailed mail piece data captured and stored in SQL for reporting.

SYSTEM SPECIFICATIONS

Feeder	Letters	Flats	Packets
Maximum Automatic Cycling Speed	10,000 pieces/hr	8,000 pieces/hr	Variable depending on piece
Manual Feeding Induction	One station standard and up to three stations optional		
Processing Range Capability	Minimum	Maximum	
Dimensions	3.125" x 5.125" x 0.007" (79mm x 130mm x 0.2mm)	13" x 15" x 0.75" (330mm x 381mm x 19mm) w/Auto Feeder; 1 3/8" (35mm) with manual feeder	
Weights	.25 oz (7 grams)	0.1 to >35 oz (5 to 1000g) (TL3 Version) 0.1 to >70 oz (5 to 2000g) (SL3 Version)	
Weighing Accuracy	+/- 1g depending on scale defined weighing range		
Envelope Type	Paper, cardboard, plastic (with structure)		
Camera Imaging System Details			
Types	4k Grayscale or Color, CMOS; 13" (331mm) Field-of-View		
Resolution	~300 pixels per inch for 0 to 1 3/8" (35mm) high (variable depending on mail piece thickness)		
OCR and BCR Capability:	Software based with address coding engines and sorting logic schemes		
Address Block Location	Automatic or manual with region of interest		
OCR Type	Multi-font, Multi-language machine print (A-Z, a-z, 0-9, / * & % # ' etc.) and optional handprint		
Print Sizes	8 - 24 point fonts with a 8 point minimum recommendation		
Print Types	Laser, typeset, NLQ dot matrix, impact, high quality inkjet, handwritten		
BCR Types	1D and 2D barcode types with optional software licenses		
Lines Read	Up to 8 lines in address block		
Maximum Address Skew	+/- 5° (10 point, 6ipi) less tolerance with near touching characters		
Printing System Details			
Direct Ink Jet Printing	300 x 600 dpi with either a vertical 1.5 inch or 3" inch x 11" horizontal print area		
Print Thickness Range	Up to 1 3/8 inch (35mm) thick mail pieces		
BRC Types	1D and 2D barcodes		
Ink Types	Black and various other colors water based inks; Fast drying and solvent versions also		
Optional Features			
Air Blow or Tamp Label Applicator	Range of label sizes can be supported and configured at maximum cycle speeds		
Print and Apply Label Applicator	Range of label sizes and print supported with reduced cycle speeds		
Mail Format Detection	Categorizes letters, flats, and packets for postal format recognition		
Container Bundle Label Printers	Optional sub-systems for printing container labels after sweeping sorting outlets		
Sorting Solutions			
SL3 Sorting Module	Single level with 3 sorting outlets per module; outlet full sensor & status lamp/switch, optional LED display		
SL3 Sorting Module Thickness Range	Up to 1 5/8 inch (42mm) thick mail pieces; Optional 2 3/8 inches (60 mm) version.		
TL3 Sorting Module	3 level with 3 sorting outlets per module; outlet full sensor, status lamp/switch, optional LED display		
TL3 Sorting Module Thickness Range	Up to 5/8 inch (16mm) thick mail pieces; Optional 3/4 inches (20 mm) version.		
Environmental			
Electrical Power	Typically: 208/400 VAC; 3 Ph; 60 or 50 Hz; 20 to 100 AMPS (depending on system size) 5 wire connection		
Pneumatic Air	Clean, Dry Compressed Air Supply @ 100 PSI (6.89 Bar); 4 to 20 CFM (113 to 566 LPM) depending on system size		
Network	Two 1Gb CAT6 Ethernet Connections		
Temperature/Humidity Operating Range	50 – 90° F (10 - 33° C) / 20 – 80% non-condensing		
Certifications	USPS MASS, CE, WELMEC , OIML		



ID Parcel & Mail Solutions Headquarters

WHAT SETS US APART

ID Parcel and Mail Solutions is a nimble and experienced organization that provides affordable solutions without sacrificing quality. We do so by identifying the essential needs of our customer's operation. This way we can configure or design a system that achieves critical goals without the added cost of a higher speed system that can't be fully utilized,

or with ancillary components that would otherwise add to the cost. We build our systems with best-in-class technologies from leading manufacturers. And because we're a smaller organization we do not carry the significant overhead that many larger automation system providers do. The result is the highest quality product at a low-cost point.

TRUSTED PARTNERSHIPS

For over 26 years, we've been providing robust and complex systems for well-established organizations that include Air Business, Ltd (a subsidiary of An Post), Asendia, ePost Global Shipping, The Mail Group, Post Danmark (now PostNord), PostNL & TNT Post, Deutsche Post/DHL Global Mail, and Royal Mail. Solutions have included standard and custom hardware and software designs and solutions from very simple and easy to maintain products to fully

automated OCR and sorting systems used around the clock. Data integration is a critical aspect of automation and ID Parcel and Mail has provided a range of solutions from very simple to sophisticated customer IT systems such as Microsoft SQL, SAP or proprietary customer APIs for data that is used in routing packages and mail, customer invoicing of postage and fees, customs and shipment manifesting, and operational reporting and tracking.



515 John Downey Drive
New Britain, CT 06051-2435

860-344-3333

www.idparcelandmail.com

sales@idparcelandmail.com